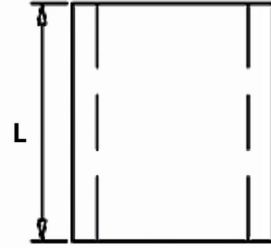
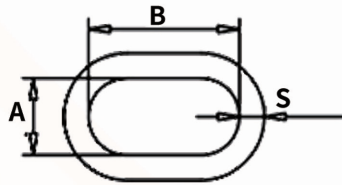
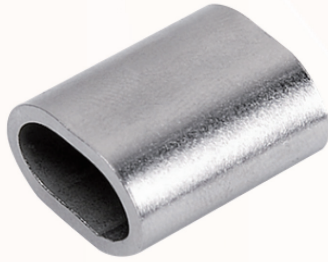
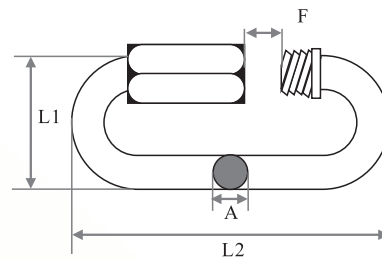


Stainless Steel Oval Sleeves



Size	A (mm)	B (mm)	S (mm)	L (mm)	kg /1000pcs
1.5	1.9	3.8	0.5	5.5	0.67
2.0	2.6	5.2	0.6	5.5	0.86
2.5	3.2	6.4	0.6	5.5	1.34
3.0	3.8	7.6	0.58	8.3	3.32
4.0	5.0	10.0	1.0	8.3	6.50
5.0	6.0	12.0	1.2	8.3	7.92
6.0	7.4	14.8	1.5	17.4	9.88
8.0	9.4	18.8	1.8	17.4	12.61

Quick Link



Size	A (mm)	L1 (mm)	L2 (mm)	F (mm)	kg/1000pcs
M3.5	3.5	37.0	17.7	5.0	8.5
M4	4.0	40.8	19.5	6.5	11.5
M5	5.0	49.6	23.7	6.5	20.5
M6	6.0	57.5	27.4	7.5	33.5
M8	7.8	75.4	34.2	11.0	78.5
M10	9.8	89.5	42.1	13.0	135.0
M12	11.6	106.0	48.7	14.0	211.0
M14	13.6	121.8	57.2	15.7	350.0

• Note: We reserve the right to change parameters without prior notification.